



Build World-class Industrial Equipments
with Craftsmanship Spirit

Valve specifications parameter

Operating temperature
10-40°C (50-104°F)

Viscosity Range
1 - 500,000+ cps

Maximum output pressure
20 bar

Fluid viscosity
From water to paste, granular fillers can be applied

Dimensions, velocity of flow and fluid inlets will vary depending on pump size. Refer to the table on page 2.



MICRO series

About Auger Valve

The design of the auger valve adopts an eccentric screw structure design, the rotor and stator cooperate to form a double sealed chamber, which is independent of each other and alternately continuous. As the rotor turns inside the stator, the fluid moves in a spiral along the axis of the rotor without changing shape or volume, which allows the fluid to be transported from the inlet to the outlet without shearing the medium or affecting the medium's properties.

The screw and stator have self-sealing ability, and the stator and rotor rotate to cooperate with the stable conveying cavity to output quantitatively. The motor can reverse and suck back to easily cut off the adhesive, perfectly solving the problems of dripping and drawing during the dispensing process.

- Volumetric fluid transfer, the flow rate is not affected by pressure changes.
- Closed-loop motor drive, high output accuracy.
- Stator with excellent corrosion and particle resistance.
- Rotor with high hardness Violetrial, more wear-resistant characteristics.
- Suitable for low to high viscosity colloids.
- No dripping or colloidal wire drawing problems in dispensing
- Supports RS232 communication, real-time monitoring of dispensing status.
- Supports time mode, automatic mode, volume mode, automatic drip, automatic suction.

Suitable for UV glue, red glue, sealing silicone, lubricating grease, conductive glue, epoxy glue, heat dissipation silicone grease and other types of single-component fluids.



Model	DV-S08	DV-S20	DV-S65	DV-S200
Type	Micro	Small flow	Conventional	Multiple flow
Input pressure	0~6 bar			
Maximum output pressure ^①	20 bar			
Self-sealing capability ^②	≈ 2 bar			
Fluid viscosity	From water to paste, granular fillers can be applied			
Flow rate	Max. 0.72 ml/min	Max. 1.8 ml/min	Max. 5.8 ml/min	Max. 18 ml/min
Applicable stator and rotor models	DM08	DM20	DM65	DM200
Minimum dispensing amount	0.001ml	0.002ml	0.004ml	0.01ml
Output accuracy ^②	± 1%			
Rotor Violetrial ^③	SUS304 / SUS316L / Zirconia Ceramics			
Stator Violetrial ^③	FFKM / PU / EPDM / NBR			
Violetrial of liquid receiving part	SUS304 / POM / PTFE / PEEK / AL			
Feed port	Φ6mm Violetrial pipe, Luer connector, G1/8 screw thread			
Discharge port	Luer connector			
Ambient temperature	10~40°C			
Dispensing consistency	> 99%			
Note	<p>① The maximum output pressure and sealing decrease with decreasing viscosity and increase with increasing viscosity.</p> <p>② Accuracy is the output accuracy of one rotation of the rotor and depends on the viscosity of the Violetrial.</p> <p>③ Rotor and stator Violetrials vary depending on the application fluid, please consult the manufacturer for details.</p>			



Build World-class Industrial Equipments
with Craftsmanship Spirit

Valve specifications parameter

Operating temperature
10-40°C (50-104°F)

Viscosity Range
1 - 500,000+ cps

Maximum output pressure
20 bar

Fluid viscosity
From water to paste, suitable for particle fillers

Dimensions, velocity of flow and fluid inlets will vary
depending on pump size. Refer to the table on page 2.



MICRO series

About Auger Valve

The design of the auger valve adopts an eccentric screw structure design, the rotor and stator cooperate to form a double sealed chamber, which is independent of each other and alternately continuous. As the rotor turns inside the stator, the fluid moves in a spiral along the axis of the rotor without changing shape or volume, which allows the fluid to be transported from the inlet to the outlet without shearing the medium or affecting the medium's properties.

The screw and stator have self-sealing ability, and the stator and rotor rotate to cooperate with the stable conveying cavity to output quantitatively. The motor can reverse and suck back to easily cut off the adhesive, perfectly solving the problems of dripping and drawing during the dispensing process.

Main Features:

- Volumetric fluid transfer, the flow rate is not affected by pressure changes.
- Closed-loop motor drive, high output accuracy.
- Stator with excellent corrosion and particle resistance.
- Rotor with high hardness Violetrial, more wear-resistant characteristics.
- Suitable for low to high viscosity colloids.
- Monitoring and Adjustment of A/B Ratio.
- Support time mode, automatic mode, volume mode, automatic glue dripping, proportional control
- Support full data monitoring, covering pressure, temperature, glue quantity, etc.

Scope of application:

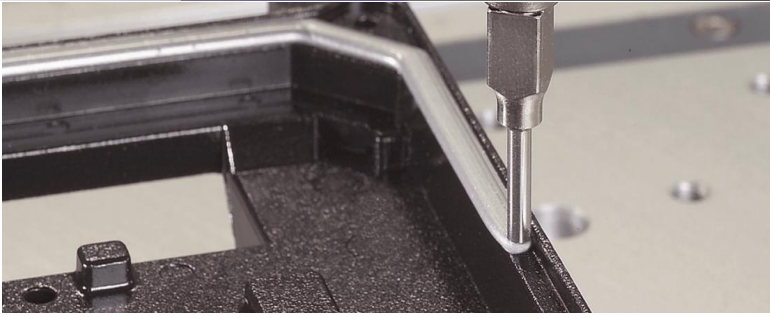
Applicable to two-component fluids such as acrylic, epoxy, and thermal conductive paste; easily realize ceramic bonding, metal bonding, non-metal bonding, magnet bonding, sealing, thermal conductivity and other processes.



Model	DV-D20	DV-D65	DV-D200
Type	Medium flow	Medium to high flow	Large flow
Input pressure	0~6 bar		
Maximum output pressure ^①	20 bar		
Self-sealing capability ^②	≈ 2 bar		
Fluid viscosity	From water to paste, granular fillers can be applied		
Flow rate	Max. 3.6 ml/min	Max. 11 ml/min	Max. 36 ml/min
Applicable stator and rotor models	DM20	DM65	DM200
Minimum dispensing amount	0.002ml	0.004ml	0.01ml
Output accuracy ^③	±1%		
Rotor Violetrial ^③	SUS304 / SUS316L / Zirconia Ceramics		
Stator Violetrial ^③	FFKM / PU / EPDM / NBR		
Violetrial of liquid receiving part	SUS304 / POM / PTFE / PEEK / AL		
Feed port	Φ6mm Violetrial pipe, Φ12mm Violetrial pipe, G1/8 screw thread		
Discharge port	Standard mixer base (1:1 / 1:2 / 1:10)		
Ambient temperature	10~40°C		
Mixing ratio	1:1 ~100:1		
Dispensing consistency	> 99%		
Note	<p>① The maximum output pressure and sealing decrease with decreasing viscosity and increase with increasing viscosity.</p> <p>② Accuracy is the output accuracy of one rotation of the rotor and depends on the viscosity of the Violetrial.</p> <p>③ Rotor and stator Violetrials vary depending on the application fluid, please consult the manufacturer for details.</p>		

BROCKEN

Build World-class Industrial Equipments
with Craftmanship Spirit



HUGE series

About Auger Valve

The design of the auger valve adopts an eccentric screw structure design, the rotor and stator cooperate to form a double sealed chamber, which is independent of each other and alternately continuous. As the rotor turns inside the stator, the fluid moves in a spiral along the axis of the rotor without changing shape or volume, which allows the fluid to be transported from the inlet to the outlet without shearing the medium or affecting the medium's properties.

The screw and stator have self-sealing ability, and the stator and rotor rotate to cooperate with the stable conveying cavity to output quantitatively. The motor can reverse and suck back to easily cut off the adhesive, perfectly solving the problems of dripping and drawing during the dispensing process.

Main Features:

- Volumetric fluid transfer, the flow rate is not affected by pressure changes.
- Stator with excellent corrosion and particle resistance.
- Rotor with high hardness Violetrial, more wear-resistant characteristics.
- Suitable for low to high viscosity colloids.
- Supports time mode, automatic mode, volume mode, automatic drip, automatic suction.
- *Access to larger fluid pipelines
- *Larger space inside the valve body, easier to clean
- *Improved sealing performance
- *Able to handle ultra-high viscosity and high-filler fluids
- *Improved potting output efficiency

Scope of application:

Suitable for UV glue, sealing silicone, lubricating grease, conductive glue, epoxy glue, heat dissipation silicone grease and other types of single-component fluids; easily realize ceramic bonding, metal bonding, non-metal bonding, magnet bonding, sealing, thermal conductivity and other processes.

Valve specifications parameter

Operating temperature
10-40°C (50-104°F)

Viscosity Range
1 - 500,000+ cps

Maximum output pressure
20 bar

Fluid viscosity
From water to paste, suitable for particle fillers

Dimensions, velocity of flow and fluid inlets will vary depending on pump size. Refer to the table on page 2.



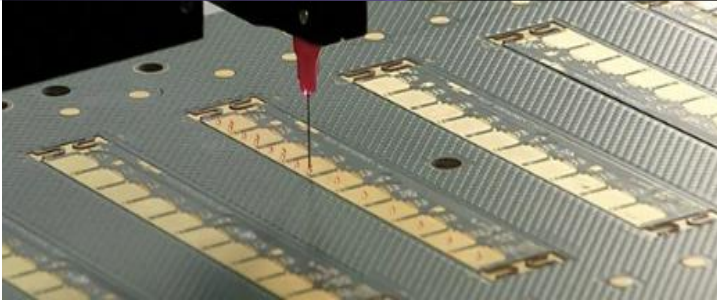
www.brocken2025.com
WhatsApp/WeChat: +86 18261920340



model	DV-S350	DV-VS1000	DV-S2000
type	Medium flow	Medium to high flow	Large flow
input pressure	0~6 bar		
Maximum output pressure ^①	20 bar		
Self-sealing capability ^②	≈ 2 bar		
Fluid viscosity	From water to paste, granular fillers can be applied		
Flow rate	Max. 31.5 ml/min	Max. 90 ml/min	Max. 180 ml/min
Applicable stator and rotor models	DM350	DM1000	DM2000
Minimum dispensing amount	0.01ml	0.02ml	0.04ml
Output accuracy ^②	±1%		
Rotor Violetrial ^③	SUS304 / SUS316L / Zirconia Ceramics		
Stator Violetrial ^③	FFKM / PU / EPDM / NBR		
Violetrial of liquid receiving part	SUS304 / POM / PTFE / PEEK / AL		
Feed port	G1/2 screw thread, KF16		
Discharge port	G1/4 screw thread, High-pressure needle		
Ambient temperature	10~40°C		
Dispensing consistency	> 99%		
Note	<p>① The maximum output pressure and sealing decrease with decreasing viscosity and increase with increasing viscosity.</p> <p>② Accuracy is the output accuracy of one rotation of the rotor and depends on the viscosity of the Violetrial.</p> <p>③ Rotor and stator Violetrials vary depending on the application fluid, please consult the manufacturer for details.</p>		

The logo for BROCKEN, featuring the word in a stylized, multi-colored font (purple, blue, green) with a black outline, set against a dark blue background.

Build World-class Industrial Equipments
with Craftmanship Spirit



Valve specifications parameter

Operating temperature
10-40°C (50-104°F)

Viscosity Range
1 - 500,000+ cps

Maximum output pressure
20 bar

Fluid viscosity
From water to paste, suitable for particle fillers

Dimensions, velocity of flow and fluid inlets will vary
depending on pump size. Refer to the table on page 2.

HUGE series

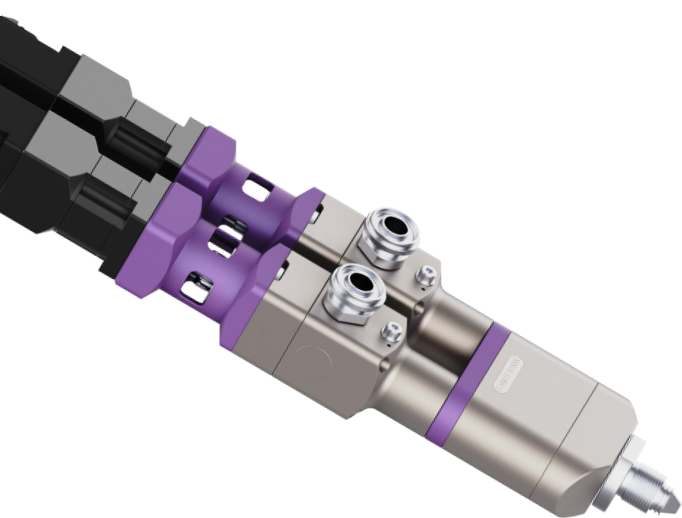
About Auger Valve

The design of the auger valve adopts an eccentric screw structure design, the rotor and stator cooperate to form a double sealed chamber, which is independent of each other and alternately continuous. As the rotor turns inside the stator, the fluid moves in a spiral along the axis of the rotor without changing shape or volume, which allows the fluid to be transported from the inlet to the outlet without shearing the medium or affecting the medium's properties.

The screw and stator have self-sealing ability, and the stator and rotor rotate to cooperate with the stable conveying cavity to output quantitatively. The motor can reverse and suck back to easily cut off the adhesive, perfectly solving the problems of dripping and drawing during the dispensing process.

- Volumetric fluid transfer, the flow rate is not affected by pressure changes.
- Closed-loop motor drive, high output accuracy.
- Stator with excellent corrosion and particle resistance.
- Rotor with high hardness Violetrial, more wear-resistant characteristics.
- Suitable for low to high viscosity colloids.
- No dripping or colloidal wire drawing problems in dispensing
- Supports RS232 communication, real-time monitoring of dispensing status.
- Supports time mode, automatic mode, volume mode, automatic drip, automatic suction.

Suitable for UV glue, red glue, sealing silicone, lubricating grease, conductive glue, epoxy glue, heat dissipation silicone grease and other types of single-component fluids.





Model	DV-D350	DV-D1000	DV-D2000
Type	Small flow	Conventional	Multiple flow
Input pressure	0~6 bar		
Maximum output pressure ^①	20 bar		
Self-sealing capability ^②	≈ 2 bar		
Fluid viscosity	From water to paste, granular fillers can be applied		
Flow rate	Max. 31.5 ml/min	Max. 90 ml/min	Max. 180 ml/min
Applicable stator and rotor models	DM350	DM1000	DM2000
Minimum dispensing amount	0.01ml	0.02ml	0.04ml
Output accuracy ^③	±1%		
Rotor Violetrial [®]	SUS304 / SUS316L / Zirconia Ceramics		
Stator Violetrial [®]	FFKM / PU / EPDM / NBR		
Violetrial of liquid receiving part	SUS304 / POM / PTFE / PEEK / AL		
Feed port	G1/2 screw thread, KF16		
Discharge port	Standard mixer base (1:1 / 1:2 / 1:10)		
Ambient temperature	10~40°C		
Mixing ratio	1:1 ~100:1		
Dispensing consistency	> 99%		
Note	<p>① The maximum output pressure and sealing decrease with decreasing viscosity and increase with increasing viscosity.</p> <p>② Accuracy is the output accuracy of one rotation of the rotor and depends on the viscosity of the Violetrial.</p> <p>③ Rotor and stator Violetrials vary depending on the application fluid, please consult the manufacturer for details.</p>		

Micro / Huge series

Valve Control and Violetrial Feeding System**Valve Control Unit**

- **CMV600S/D series** are suitable for driving **CMV600S/MD** series valve
- **CHV800S/D series** are suitable for driving **CHV800S/HD** series valve
- The controller is compatible with single-component and two-component valve bodies
- Touchscreen operation
- Multiple control modes
- Stable control
- Supports time mode, automatic mode, volume mode, automatic glue dispensing
- Glue suction (single component)
- Proportional free control (1:1~1:100)
- Applicable to various types of auger valve coating and dispensing applications

**CHV800S/D
series****CMV600S/D
series**

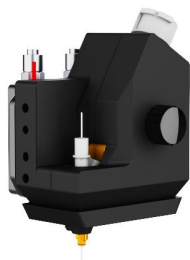
BROCKEN

Build World-class Industrial Equipments
with Craftmanship Spirit

Micro / Huge series Valve Control and Violetrial Feeding System

Violetrial Feeding System FSV490

- Applicable to fluid packaging 200~490ml (1:1~1:10)
- Compensate for the error between the glue supply system and the valve body
- Proportional imbalance alarm to prevent valve body damage
- Prevent production defects caused by proportional imbalance during the production process
- Make glue fully utilized and greatly reduce waste
- Prevent operators from operating incorrectly (Even if the operator makes a mistake, the system will automatically discharge glue according to the ratio preset in the background.)
- The upgraded version supports data monitoring and upload to the IPC



Violetrial Cooling System CSV6060

Large flow water circulation cooling, the lowest cooling temperature can reach -20°C

- The traditional gas cooling method requires AB glue to be discharged every 15 seconds, and the electronic cooling method discharges glue every 45 seconds.
- The electronic cooling method only needs power supply, saving gas source
- The thermostat can dynamically adjust the temperature according to the set temperature
- The upgraded version supports data monitoring and upload to the IPC
- The MC43 Mod-Cooling has a drip-proof component, which effectively solves the problem of cold temperature condensation water dripping.